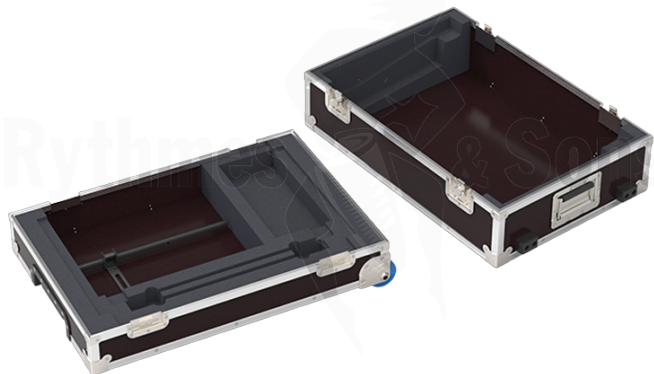


Flight cases / Lighting equipment flight cases / Flight cases for Lighting consoles

## CHAMSYS MagicQ MQ250M Stadium Flight case for lighting console



## CARACTÉRISTIQUES TECHNIQUES

Référence produit	9FFC 014200
Poids net (kg)	13.90
Brand	RYTHMES & SONS (flight-cases)
Quantity per case	1
Overall dim. (mm)	760x515xH275

### FLIGHT CASE FOR MAGICQ MQ250M STADIUM CHAMSYS LIGHTING CONSOLE

#### Product specifications and fittings

- > Top opening with shallow base
- > 6.9 mm birch plywood with brown rigid PVC laminate
- > 4 large recessed butterfly latches with guided opening/closing mechanism
- > 2 recessed flip handles with double sprung
- > CHAMSYS Logo engraving on the upper side
- > Heavy Duty Steel Pull-Out Handle with Moulded Grip
- > 2 recessed corner castors Ø75

#### Interior features

- > Foam cushioning
- > Compartment for 2 littlite + small keyboard (315 x 145 x H25) + cables

Developed and manufactured by Rythmes & Sons in France